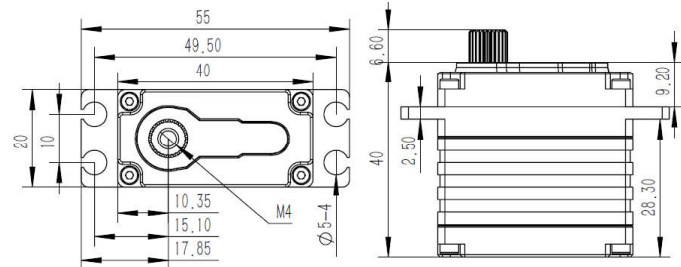
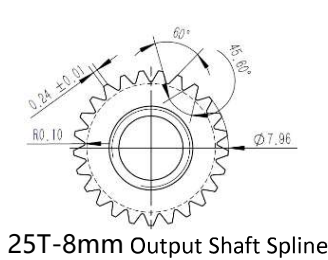


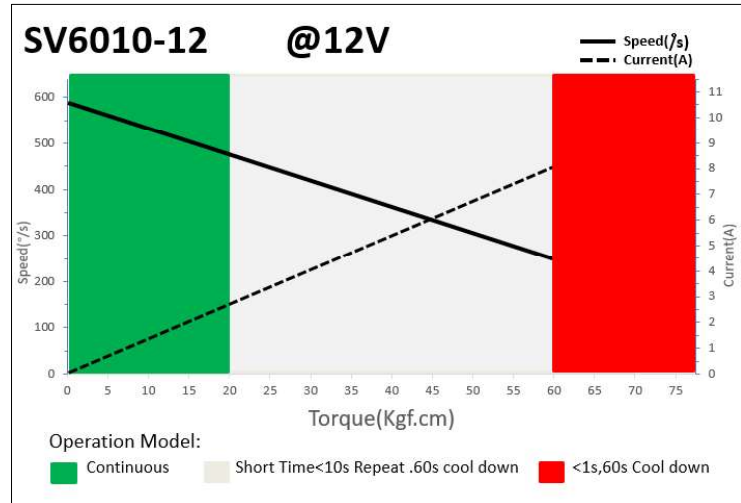
# SV6010-12 Technical Specification



## 1. Operating Data

SV6010-12	
Rated Voltage	DC12V
Voltage Range	DC8.4V-13.0V
Stalling Torque	50Kgf.cm@8.4V
	60Kgf.cm@12V
	70Kgf.cm@13V
No-load Speed	0.13sec/60°@8.4V
	0.10sec/60°@12V
	0.09sec/60°@13V
Working Frequency	1520us/333Hz
Default Travel Angle	±100°=200° Total
Temperature Range	-10°C.....+65°C
Soft Start	Programmable
Programmable	Yes
Case Material	Aluminum Alloy
Motor Type	4Pole Brushless Motor
Gear Set Material	Hardened Steel
Position Sensor	Contactless
Ball Bearing	2BB
Case Dimensions	40*20*40mm±0.2mm
Weight	75g±10%

## 2. Performance



## 3. Command signal

### PWM Command Interface

Signal Voltage	HIGH: min.3.3V, max.5.0V Low: min.0.0V, max.1.5V
Pulse Lengths	500us-2500us
Pulse Lengths for Position	500us/1500us/2500us -100°/ 0°/+100°

## 4. Electrical Connection

 3 2 1	Pin Assignment			
	1	Orange	Signal	PWM Command
	2	Red	DC+	Supply Voltage
	3	Brown	DC-	Supply Ground