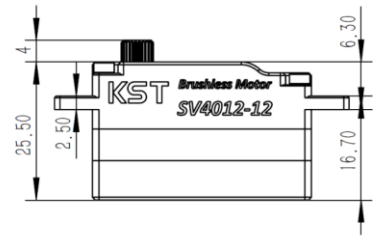
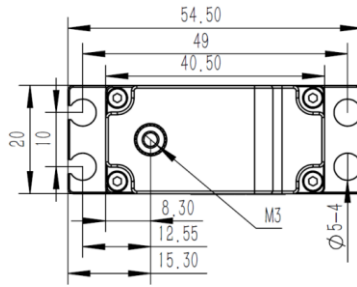


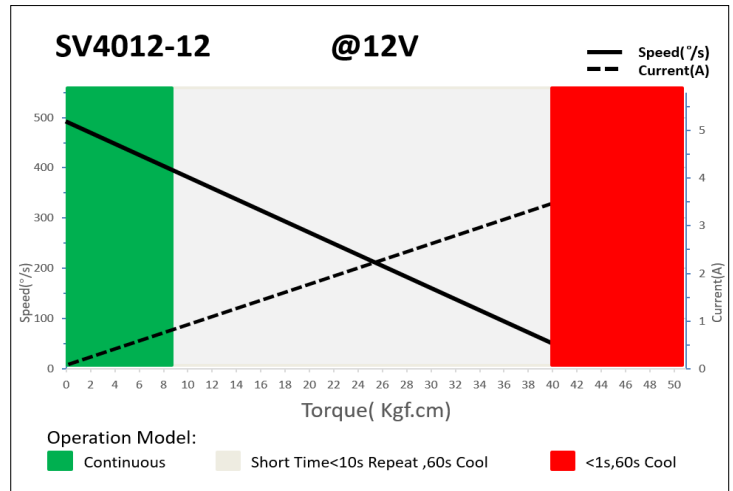
SV4012-12 Technical Specification



1. Operating Data

Rated Voltage	DC12.0V
Voltage Range	DC8.40V-13.0V
Stalling Torque	35.0Kgf.cm@8.40V
	40.0Kgf.cm@12.0V
	42.0Kgf.cm@13.0V
Speed	0.16sec/60°@8.40V
	0.12sec/60°@12.0V
	0.10sec/60°@13.0V
Start Current	2.79A@8.40V
	3.65A@12.0V
	4.05A@13.0V
Working Frequency	1520us/333Hz
Default Travel Angle	±100° =200° Total
Temperature Range	-20°C.....+65°C
Soft Start	Programmable
Programmable	Yes
Case Material	Aluminum Alloy
Motor Type	4 pole Brushless DC Motor
Gear Set Material	Hardened Steel
Position Sensor	Potentiometer
Ball Bearing	2BB
Case Dimensions	40.5*20*25.5mm±0.2mm
Weight	50g±10%

2. Performance



3. Command signal PWM Command Interface

Signal Voltage	HIGH: min.3.3V, max.5.0V Low: min.0.0V, max.1.5V
Pulse Lengths	500us-2500us
Pulse Lengths for Position	500us/1500us/2500us
	-100% 0%/+100°

4. Electrical Connection

 3 2 1	Pin Assignment			
	1	Orange	Signal	PWM Command
	2	Red	DC+	Supply Voltage
	3	Brown	DC-	Supply Ground