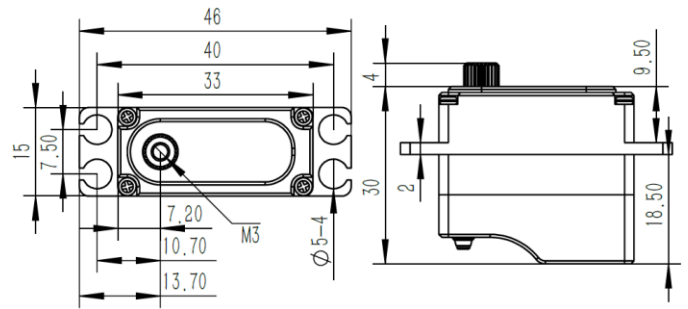
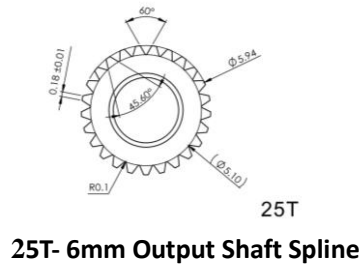


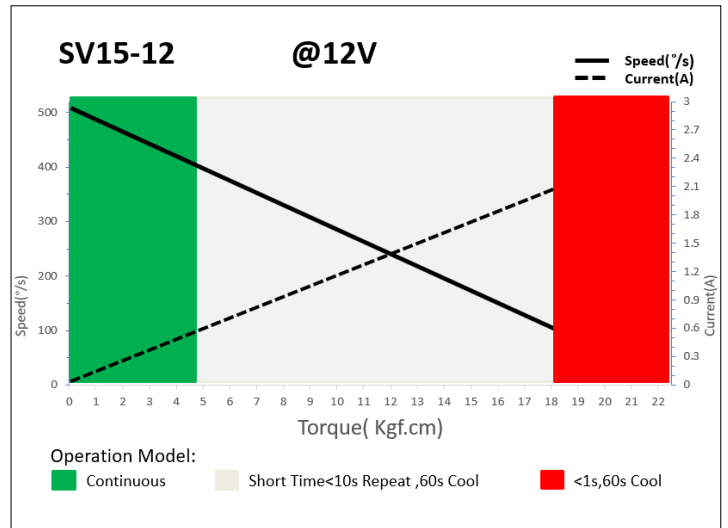
### SV15-12 Technical Specification



### 1. Operating Data

Rated Voltage	DC12.0V
Voltage Range	DC8.40V-13.0V
Stalling Torque	15.0Kgf.cm@8.40V
	18.0Kgf.cm@12.0V
	20.0Kgf.cm@13.0V
Speed	0.15sec/60°@8.40V
	0.11sec/60°@12.0V
	0.10sec/60°@13.0V
Start Current	1.50A@8.40V
	2.08A@12.0V
	2.25A@13.0V
Working Frequency	1520us/333Hz
Default Travel Angle	±60° =100° Total
Temperature Range	-10°C.....+65°C
Soft Start	Programmable
Programmable	Yes
Case Material	Aluminum Alloy
Motor Type	Coreless DC Motor
Gear Set Material	Hardened Steel
Position Sensor	Potentiometer
Ball Bearing	2BB
Case Dimensions	33mm*15mm*30mm±0.2mm
Weight	35g±10%

### 2. Performance



### 3. Command signal PWM Command Interface

Signal Voltage	HIGH: min.3.3V, max.5.0V Low: min.0.0V, max.1.5V
Pulse Lengths	900us-2100us
Pulse Lengths for Position	1000us/1500us/2000us
	-50% 0%/+50°

### 4. Electrical Connection

Pin Assignment			
<p>3 2 1</p>	1	Orange	Signal PWM Command
	2	Red	DC+ Supply Voltage
	3	Brown	DC- Supply Ground