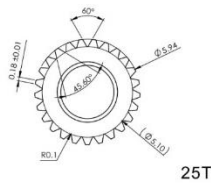
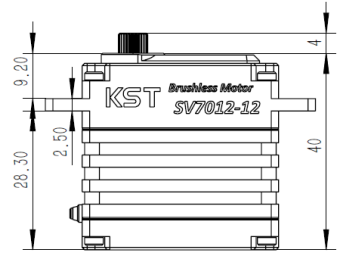
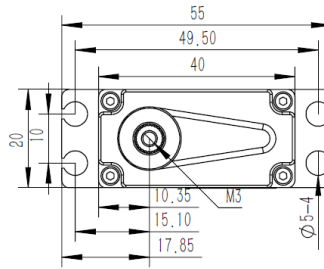


SV7012-12 Technical Specification



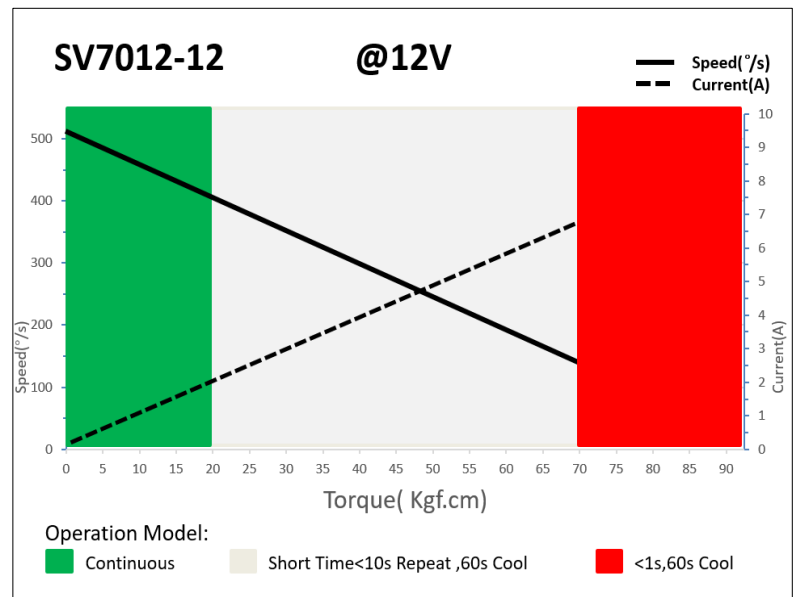
6mm25T Output Shaft Spline



1. Operating Data

2. Performance

SV7012-12	
Rated Voltage	DC12V.0
Voltage Range	DC8.40V-13.0V
Stalling Torque	55Kgf.cm@8.40V
	70Kgf.cm@12.0V
	75Kgf.cm@13.0V
No-load Speed	0.16sec/60°@8.40V
	0.12sec/60°@12.0V
	0.10sec/60°@13.0V
Working Frequency	1520us/333Hz
Default Travel Angle	±100°=200° Total
Temperature Range	-10°C+65°C
Soft Start	Programmable
Programmable	Yes
Case Material	Aluminum Alloy
Motor Type	4Pole Brushless Motor
Gear Set Material	Hardened Steel
Position Sensor	Contactless
Ball Bearing	6BB
Case Dimensions	40*20*40mm±0.2mm
Weight	75g±10%



3. Command signal

PWM Command Interface

Signal Voltage	HIGH: min.3.3V, max.5.0V Low: min.0.0V, max.1.5V
Pulse Lengths	500us-2500us
Pulse Lengths for Position	500us/1500us/2500us -100°/ 0°/+100°

4. Electrical Connection

 3 2 1	Pin Assignment			
	1	Orange	Signal	PWM Command
	2	Red	DC+	Supply Voltage
	3	Brown	DC-	Supply Ground