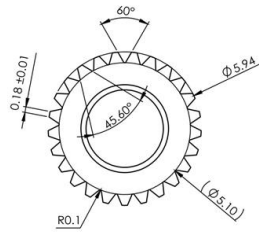
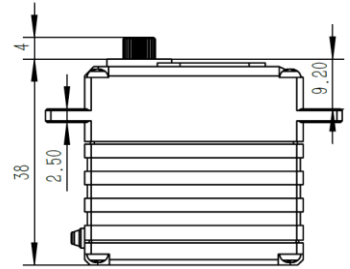
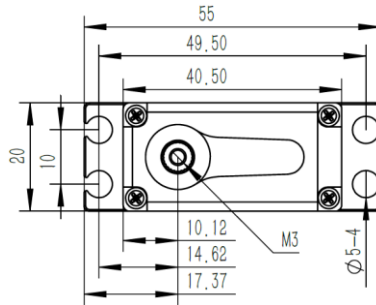


SV915-12 V3.0 Technical Specification



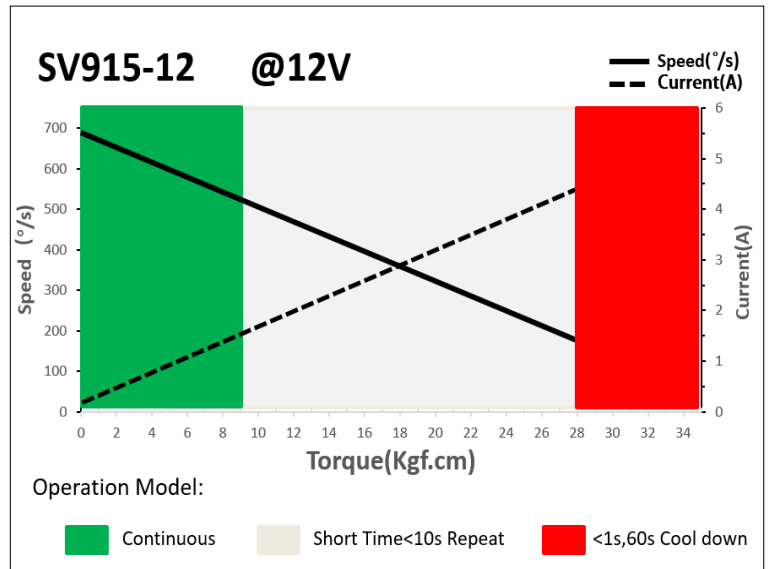
25T-6mm
Output Shaft Spline



1. Operating Data

SV915-12	
Rated Voltage	DC12V
Voltage Range	DC8.0V-13.0V
Stalling Torque	24Kgf.cm@8.4V
	28Kgf.cm@12V
	30Kgf.cm@13V
Speed	0.10sec/60°@8.4V
	0.08sec/60°@12V
	0.07sec/60°@13V
Working Frequency	760us/560Hz
Temperature Range	-20°C.....+65°C
Case Material	Aluminum Alloy
Motor Type	Brushless DC Motor
Gear Set Material	Hardened Steel
Position Sensor	Potentiometer
Case Dimensions	40.5*20*38 mm±0.2mm
Weight	70g±10%
Ball Bearing	2 BB

2. Performance



3. Command signal

3.1. PWM Command Interface

Signal Voltage	TTL-level: HIGH: min.3.3V, max.5.0V Low: min.0.0V, max.1.5V
Pulse Lengths	450us-1050us
Working Frequency	760us/560Hz

4. Electrical Connection

	Pin Assignment (PWM)			
	1	Yellow	SIG	Command Signal
	2	Red	DC+	Supply Voltage
	3	Brown	DC-(GND)	Supply Ground, Signal Ground