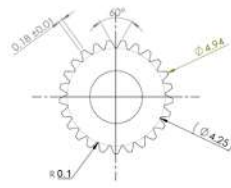
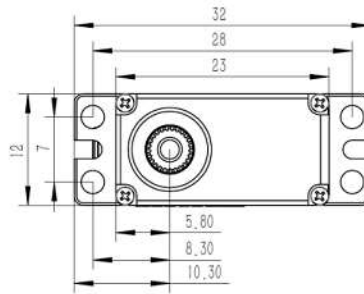


# DS215MG V8.0 Technical Specification



25T-5mm Output Shaft Spline

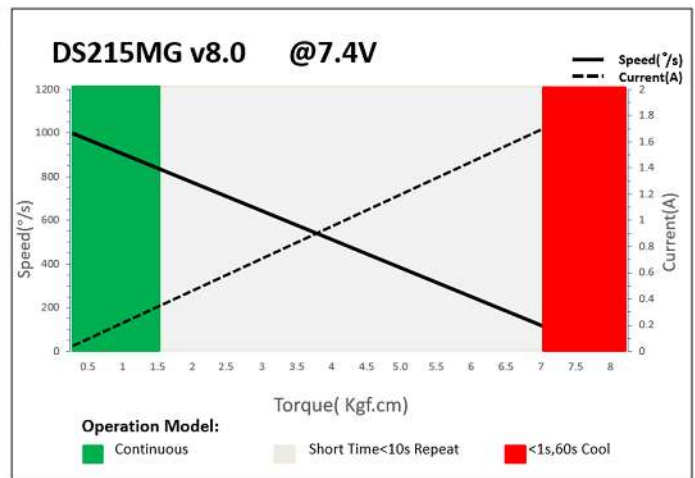


## 1. Operating Data

DS215MG V8.0	
Rated Voltage	DC7.4V
Voltage Range	DC6.0V-7.4V
Stalling Torque	3.1Kgf.cm@6.0V
	3.7Kgf.cm@7.4V
	4.0Kgf.cm@8.4V
Speed	0.060sec/60°@6.0V
	0.055sec/60°@7.4V
	0.050sec/60°@8.4V
Working Frequency	1520us/333Hz
Default Travel Angle	±70° = 140° Total
Temperature Range	-10°C .....+65°C
Soft Start	Programmable
Programmable	Yes
Case Material	Aluminum Alloy
Motor Type	Coreless DC Motor
Gear Set Material	Hardened Steel
Position Sensor	Potentiometer
Ball Bearing	2BB
Case Dimensions	23mm*12mm*27.5mm±0.2mm
Weight	20g±10%

28g

## 2. Performance



## 3. Command signal PWM Command Interface

Signal Voltage	HIGH: min.3.3V, max.5.0V Low: min.0.0V, max.1.5V
Pulse Lengths	800us-2200us
Pulse Lengths for Position -50° 0° +50°	1000us/1500us/2000us

## 4. Electrical Connection

 3 2 1	Pin Assignment			
	1	Orange	Signal	PWM Command
	2	Red	DC+	Supply Voltage
	3	Brown	DC-	Supply Ground