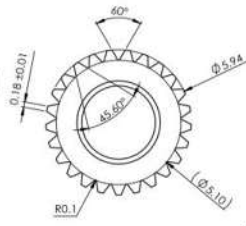
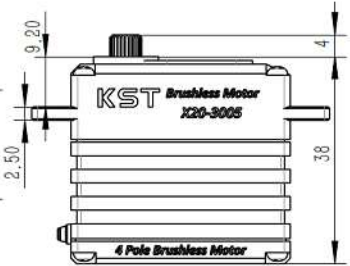
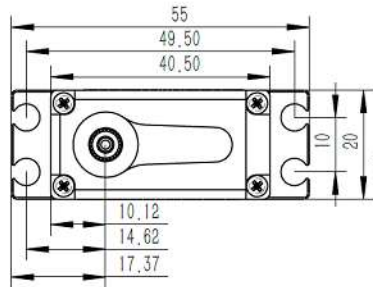


X20-3005 V8.0 Technical Specification



25T

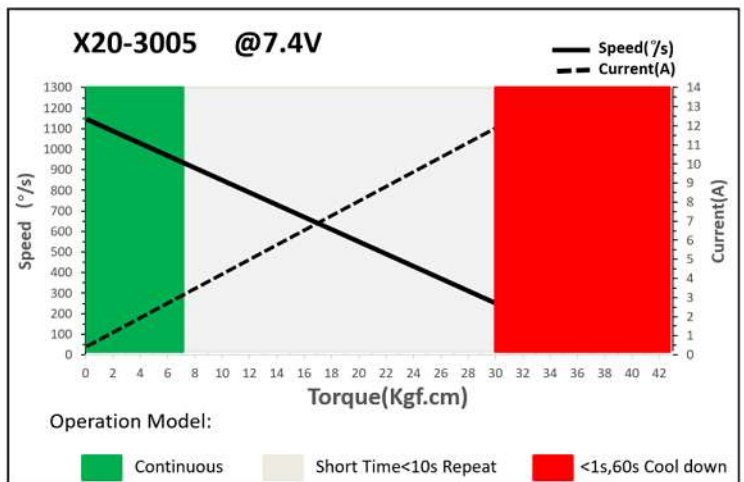
25T 6mm Output Shaft Spline



1. Operating Data

| | |
|----------------------|---------------------------|
| Rated Voltage | DC7.4V |
| Voltage Range | DC6.0V-8.4V |
| Stalling Torque | 24Kgf.cm@6.0V |
| | 30Kgf.cm@7.4V |
| | 32Kgf.cm@8.4V |
| Speed | 0.067sec/60°@6.0V |
| | 0.052sec/60°@7.4V |
| | 0.047sec/60°@8.4V |
| Stalling Current | 8.80A@6.0V |
| | 10.8A@7.4V |
| | 12.3A@8.4V |
| Working Frequency | 1520us/333Hz |
| Default Travel Angle | ±50° =100° Total |
| Temperature Range | -20°C+65°C |
| Soft Start | Yes |
| Programable | Yes |
| Case Material | Aluminum Alloy |
| Motor Type | 4 Pole Brushless DC Motor |
| Gear Set Material | Hardened Steel |
| Position Sensor | Potentiometer |
| Ball Bearing | 2BB |
| Case Dimensions | 40.5mm*20mm*38mm±0.2mm |
| Waterproof | IP65 |
| Weight | 70g±10% |

2. Performance



3. Command signal

PWM Command Interface

| | |
|---|---|
| Signal Voltage | HIGH: min.3.3V, max.5.0V Low: min.0.0V, max.1.5V |
| Pulse Lengths | 900us-2100us |
| Pulse Lengths for Position -50°/0°/+50° | 1000us/1500us/2000us |

4. Electrical Connection

| Pin Assignment | | | |
|----------------|---|--------------------|--------------------|
| | 1 | Black (White mark) | Signal PWM Command |
| | 2 | Black (Red mark) | DC+ Supply Voltage |
| | 3 | Black | DC- Supply Ground |

